



Two years after it's launch JMS is fast becoming joiners NO.1 choice

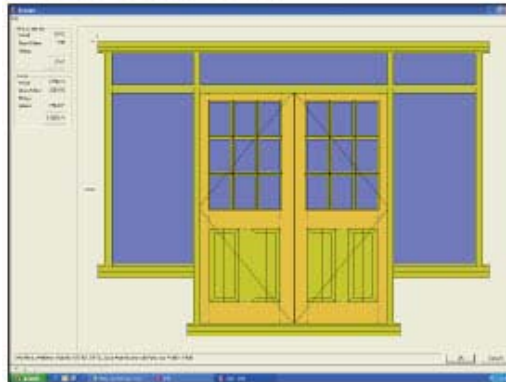
Two years after it's launch JMS is fast becoming joiners No1 choice.

Just 2 years on from its launch at Woodmex 2004, JMS has established itself as the leading software program for bespoke joinery. There are now over 140 systems throughout the UK and Ireland, even as far a field as Australia.

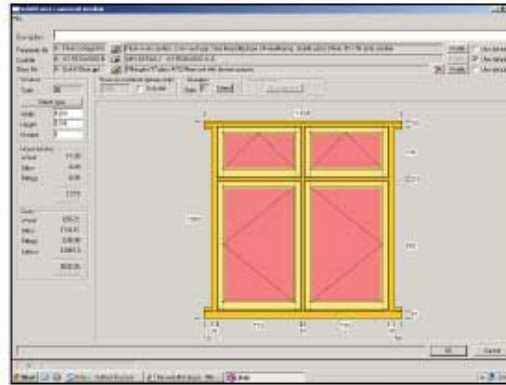
JMS now offers modules for Casement Windows (flush and storm), Sliding Sash (sprung and weighted), and Doors and Doorframes. Screens and Bill of Materials will be launched at W6. JMS allows the joiner to specify their jobs in JOINERY LANGUAGE (no funny computer formulas), then instantly creates a professional quotation – AND at the same time as quoting the

system has already created the cutting list, timber summary sheets, glass sizes and invoices.

JMS can produce the



following outputs at the touch of a button – the only information you need to enter is the sizes for the window, sliding sash, door or door frame, and



select from a list of styles. Any component can also be changed to make it bespoke.

Quotation/Estimate:

True scale drawings, and detailed specifications allow customers to see what they are getting. This allows joiners to be more professional and removes the possibility of customer disputes.

Nigel Foster, from Phase One, bought JMS 9 months ago. He comments that JMS has saved him time, particularly within quoting. *“When customers come into the workshop, for a price, I can if necessary do the quote while they wait. I now win more orders simply because I can quote quicker. I can get back into the workshop more*

now which I prefer and my evenings are free from quoting.”

Timber/Glass Summary Sheets:

The Timber Summary clearly shows your timber requirements for each job. Wastage is reduced from miscalculation or guestimating your requirements. Some customers have confirmed that clear lists have improved their relationship with their suppliers. The Glass Summary is also sufficiently detailed to be faxed straight to your glazier. It specifies glass sizes for each item and also diagrams showing the placement of false/plant-on glazing bars.

Cutting Lists:

JMS Customers comment – Roger Reedman of Woodworx UK, has been

AS SHOWN IN WOODWORKING NEWS – SEPTEMBER 2006

JoinerySoft Ltd [t] +44 (0)1608 643302 [e] enquiries@joinerysoft.com [w] www.joinerysoft.com



Two years after it's launch JMS is fast becoming joiners NO.1 choice

using JMS for 12 months: *"Working from reliable cutting lists has improved our cost control with our wood merchants. Mistakes can be costly, and JMS has given us the peace of mind and reliability to know how much timber to order, plus it gives us detailed accurate cutting lists. Our wastage has gone down dramatically! Timber / wood summaries can be faxed directly to the timber merchants."*

Martin Foy from Wealden Joinery, purchased JMS just three months ago, after it was recommended to him by another joiner. He uses a 'Steton', CNC Oscillating Chisel Mortiser and is able to punch in all the mortising details straight from the JMS cutting list. He says, *"The cutting list tells you all the stops it requires and produces perfect results*

every time. The only thing I have to do is make sure the wood I put in is cut to the right length. There is no more working it all out by hand!"

Invoicing:

The JMS total solution means that there is no more duplication of information. You can move from estimate to production to invoice easily and quickly. Future plans will enable JMS invoicing to link to accounting packages.

Joinerysoft is committed to ongoing development for JMS with 2 additional programmers joining the team within the last 6 months. Development of JMS-Stairs and JMS-CNC is well underway. Though customers are using JMS with their CNC machinery currently, the future will have seamless transition from the JMS system

straight to the joiners CNC machines. JMS already speaks joinery language, but soon it will be able to speak CNC languages too!

"Our customers shape the future JMS", explains Alan Turner, of Joinerysoft. *"We are constantly listening to our customers so that our enhancements ensure we offer the most user friendly software for bespoke joinery."* A view that is confirmed by Roger Reedman of Wordworx UK: *"Joinerysoft is a company that truly develops relationships with clients, listens to feedback and provides enhancements that really reflect the true nature of joinery. I can't praise Joinerysoft or the software enough!"*

Alan Turner of Joinerysoft comments, *"It is encouraging to know that joiners are talking amongst themselves about JMS, recommending it to each other. We realise that some of our development has taken longer than planned, however we are trying to offer our customers more than ever. The feedback we've received from customers who have our software confirms that the effort to get it right first time is worth it."* One such customer is Gary from DGM Joinery. Purchasing JMS at its launch at Woodmex 2004, Gary has witnessed the improvements to his business as a result of JMS. Still enthusiastic about JMS he comments, *"Quoting alone has saved me so much time, that I am now able to return to the workshop and get on*

with other things. Two years on I can't do without JMS and am looking forward to receiving screens and other future modules as they are released. I'll be queuing up at W6 to see more."

For more information contact:
Joinerysoft Ltd
Tel: +44 (0)1608 643302
Fax: +44 (0) 1608 643309
Email: enquiries@joinerysoft.com
www.joinerysoft.com

AS SHOWN IN WOODWORKING NEWS – SEPTEMBER 2006

JoinerySoft Ltd [t] +44 (0)1608 643302 [e] enquiries@joinerysoft.com [w] www.joinerysoft.com