

Joinerysoft simplifies U-value compliance

CONFUSED by all the options associated with energy ratings? Tempted to ignore the problem? Complying with Part L energy rating requirements is not as complicated as you think.

Launched at W10, Joinerysoft now includes automatic calcula-

tion of U-values as standard with their software for bespoke joinery.

Effective from 1 October 2010, Part L of the Building Regulations for England and Wales for the Conservation of Fuel and Power requires all joiners to provide energy ratings for windows and doors in order to

show compliance with minimum requirements. Compliance can be achieved in a number of ways, either by complex mathematical calculation specified in BS EN ISO 10077-1:2006 Part 1 or by testing a duplicate joinery item under environment conditions to provide an

energy rating specific to the individual joinery item tested.

Joinerysoft JMS software now includes the complex calculations necessary to provide U-values. Able to calculate U-values on the fly, Joinerysoft is able to provide U-values at the design stage, taking into account timber, glass and section sizes selected, enabling you to advise customers on the best specification for their windows to ensure compliance with building regulations. With JMS you can provide your cus-

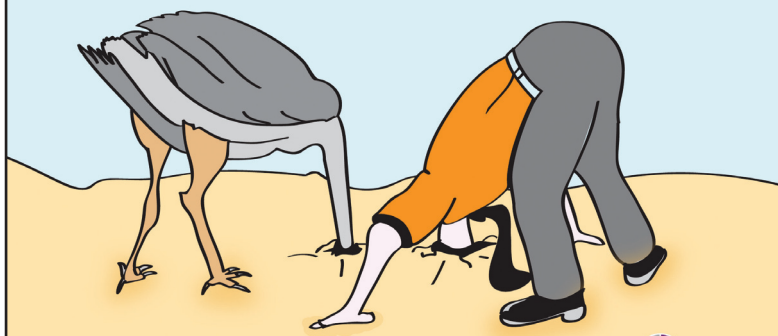
tomers with a detailed breakdown of how the U-value has been calculated giving confidence and a professional image.

Helping joinery companies become more professional, more efficient and improve profitability is all part of the remit of JMS. Designed specifically for bespoke joinery, JMS provides professional quotes with true scale diagrams (and U-values), timber, glass and fittings reports, cutting sheets, CNC machine output, delivery notes, invoices and more. With modules for Windows, Sliding Sash, Doors, Screens, Bills of Materials, Stairs and Gates joiners can match the product to their individual requirements.

The good news for joiners who already have JMS is that automatic U-value calculation comes as a free update with maintenance and support. For those without JMS, why not see for yourself how JMS can transform your business.

Joinerysoft Ltd
Tel 01608 643302
Email enquiries@joinerysoft.com
www.joinerysoft.com

**Not sure how to deal with U-values?
 Don't Bury Your Head In The Sand...**



Automatic U-value Calculator

Joinerysoft

Cabinet Vision wizard replaces heavy customisation

THE NEW Cabinet Vision 2011 R1 release for woodworking professionals contains a raft of updated and newly developed features, which will help businesses to become even more efficient.

Included in the extensive developments to the award-winning software is an expanded Assembly Wizard allowing end-users to specify very sophisticated construction techniques that were previously only available through heavy customisation.

The addition of the configuration of Blind Dado, Fixed Dowel, and typical RTA Construction Techniques via a simple to use Wizard interface allows the end-user to configure highly specialised construction methods very quickly. The ability to save and recall Job Property Schemes will allow end-users to quickly and easily define new jobs with all the specifications pre-defined.

Woodworkers using Cabinet Vision Ultimate, the premiere level of Cabinet Vision, will gain the ability to shape Parts with typical 2D CAD tools quickly and easily. In addition to Advanced CAD shaping, Ultimate users will be able to add Constraints to individual Parts, giving them full parametric control of their shaped Parts.

Cabinet Vision's Screen to Machine solution, the S2M Center, has also been significantly developed with 2011 R1. The S2M Center, previously only available to Cabinet Vision users, will now be offered as a stand-alone solution to any CAD user who needs to get individual, or batches of, dxf drawings from Screen to Machine.

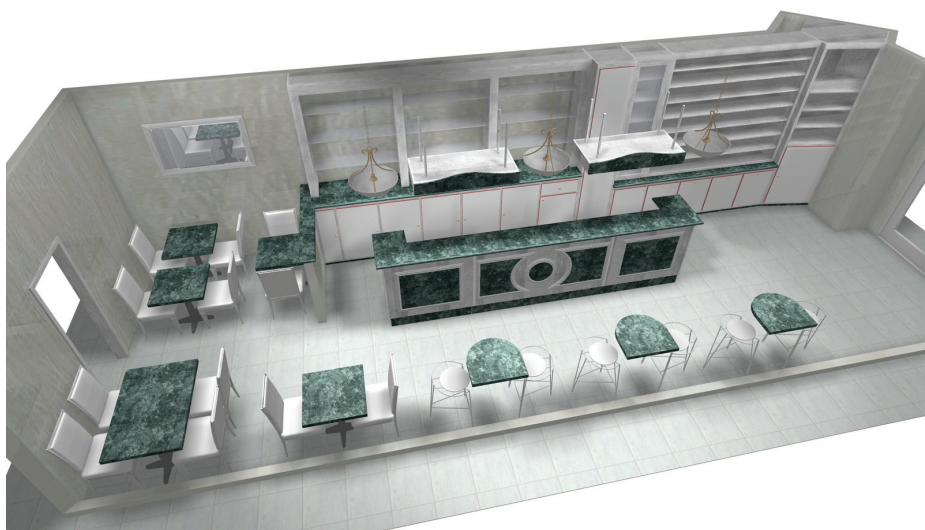
In addition, the True Shape Nesting engine has been re-written with significant processing time and Yield improvements of nearly 60%. The addition of 6th Face Nesting and

Common Line Cutting are just a few of the powerful new features available in S2M Center 2011 R1.

Chip Martin, Cabinet Vision Product Manager, says: "I am very excited about Cabinet Vision 2011 R1 and believe it will allow our existing and future customers to take their businesses to the next level."

Cabinet Vision's large supported customer base will receive the new release automatically as part of Planit Advantage, its leading support and maintenance package.

Cabinet Vision
Tel 01233 506100 ● www.cabinetvision.com



This rendering features a little café, demonstrating how Cabinet Vision does so much more than simply kitchens and bathrooms.